



INFO-CAPTURE 5.x

Release Notes

PROFORMANCE
96 Beach Walk Blvd, Suite 104
Conroe, TX 77304
281.292.9000

www.pf-inc.com

09/04/2018

Contents

Version 5.0.12283.2	3
Version 5.0.13007.4	4
Version 5.0.13035.1	5
Version 5.0.13057.1	6
Version 5.0.13060.1	6
Version 5.0.13072.1	7
Version 5.0.13081.1	9
Version 5.0.13211.1	11
Version 5.0.13317.1	11
Version 5.0.14014.1	12
Version 5.0.14178.1	12
Version 5.0.14272.1	12
Version 5.0.14314.1	13
Version 5.0.15091.1	14
Version 5.0.15125.1	14
Version 5.6.15191.3	14
Version 5.6.15264.2	14
Version 5.6.15334.1	15
Version 5.7.16047.1	15
Version 5.7.16183.2	15
Version 5.7.16348.1	15
Version 5.7.17214.1	15
Version 5.7.17285.1	15
Version 5.7.17303.3	16
Adobe DC v 2018-009-20050	16
Version 5.7.17321.1	16
Version 5.7.18056.1	17
Version 5.7.18163.1	18
Version 5.7.18241.1	18

Version 5.0.12283.2

Release Date: 10/09/2012

Defects Corrected

After last document was cleared using 'Clear Current Document', the Global Keyword Cache was not being cleared. This issue is resolved and the cache properly clears.

On Shadow-copy, if the file name being saved was the same as an existing file, error would occur. Now overwrite of exiting file occurs.

On Shadow-copy, if the IC viewer was closed and shadow copy was unable to execute for any reason, either a Yes or No response to the error message resulted in the viewer closing without save. This now leaves the user in the app to resolve the issue.

External Credentials may now be removed via the UI.

Autofill Keywords were not being filled in at document import when the primary keyword was changed unless the primary key was first in the list. This is now resolved.

A required keyword that had no value when the document was first displayed did not get marked as 'required'. This allows documents to be saved with required keywords. This is now resolved.

When two documents are in the viewer and the signature is set on the first document and reload is selected; the signature should be removed. Previously, if a second document was selected and then the first document was selected the signature was not being removed. This is now resolved.

Enhancements

Merge Publisher

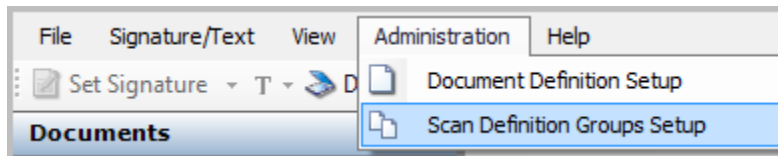
Version 5 of the INFO-CAPTURE application re-initiates the Merge Publisher functionality in environments desiring to move Publisher functions from the server to the desktop. This capability is used in limited installations.

Active Directory Integration

INFO-CAPTURE is fully AD compliant.

Scan Definition Groups

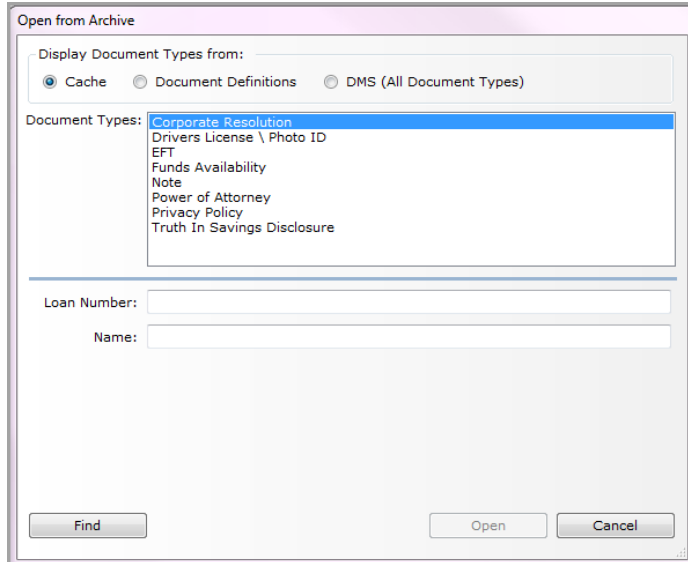
Grouping of Document Definitions – Provides the ability to group document definitions displayed on the Scan option on both the Menu and Toolbar. This is particularly helpful when there are a large number of scan document definitions defined.



Open from Archive

Allows for retrieving documents in a more efficient and organized way. Documents can be retrieved by selecting:

- *Cache – Previously retrieved documents.*
- *Document Definitions – Documents that only have document definitions defined.*
- *DMS (All Document Types) – A listing of all document types in OnBase*



Set Text

Provides the ability to apply typed text to a captured image much like the Set Signature function works. Text areas must be pre-defined at the document definition level providing the user the ability to set text on documents as needed.

Version 5.0.13007.4

Release Date: 1/18/2013

INFO-CAPTURE Version 5.0 Build 13007.4 corrects one defect and incorporates five new features. The following provides a brief narrative of the changes found in this build.

Defects Corrected

Error Messages

There was a lack of consistency with system generated error messages when work was terminated without saving. The system now produces standard error messages informing the user that all work will be lost if a 'Save' function is not initiated. The user will have the choice of continuing or returning to save their work.

Enhancements

Communication Interruption

If the communication link between **INFO-CAPTURE** and OnBase is encountered, the system will present a standard error message so the user can intervene to re-establish the connection.

Renaming Document Definitions

The system now employs a simple function to permit the changing of a document definition name. The user would highlight the document definition to be renamed and click on it with the mouse. The user would then type in the new document definition name and click again with the mouse.

The renamed document definition would retain all of the configuration settings without any changes. The system will also prevent the renaming of a document definition to one that is already in existence and will generate an error message if an attempt is made to do so.

Undo Last Signature Function

A new function has been added that will remove or 'Undo' the last signature or text placed on a document. After the signature process or text placement process has concluded, pressing a button on the toolbar will result in the system presenting the user with a dialog box inquiring if the user would like to reload the document from the last revision.

External Credential for Print Spooler

When working with mainframe data streams, the system now assigns a user's external credentials automatically which eliminates the user having to manually enter their credentials in order to engage the Print Spooler.

Undefined Text

Functionality has been added which provides the ability to create an undefined text area on a document. A user with this permission would use the 'Set Text' function on the toolbar to place text anywhere on a document.

Version 5.0.13035.1

Release Date: 2/5/2013

INFO-CAPTURE Version 5.0 Build 13035.1 corrects eight defects. The following provides a brief narrative of the changes found in this build

Defects Corrected

Document Definition Signatures Screen

In a Document Definition, when working with the Signatures screen, if a Signature Definition Name was highlighted and the "Delete" button was selected, the system would not perform the delete function. Terminating the process using the "Cancel" button at the bottom of the screen was the only method of exiting the Signatures screen.

Document Definition Scan Definition Screen

In a Document Definition, when working with the Scan Definition screen, pressing the "Delete" button would result in the Scan Definition screen closing without deleting the scan definition.

Document Definition Text Input Screen

In a Document Definition, when working with the Text Input screen, if a Text Input Definition Name was highlighted and the "Delete" button was selected, the system would not perform the delete function. Terminating the process using the "Cancel" button at the bottom of the screen was the only method of exiting the Text Input screen.

Document Definition Keyword Definition Screen

In a Document Definition, when working with the Keyword Definition screen, if a Keyword Definition Name was highlighted and the "Delete" button was selected, the system would not perform the delete function. Terminating the process using the "Cancel" button at the bottom of the screen was the only method of exiting the Keyword Definition screen.

Document Definition Renaming Function

If a user attempted to change the name of a previously configured Document Definition, the system responded with an exception error. Selecting "Continue" on the error resulted in no change to the Document Definition name. Additionally, the system now checks for similar Document Definition names to prevent a user from renaming a Document Definition to one that already exists.

Database Deployment Script

When the INFO-CAPTURE deployment script was executed, an error was generated due to a missing line in the SQL script.

Options Screen Save Functions

When multiple changes were made to the same setting on the Options screen without logging out of the application after each change, the application displayed a non-descriptive error message. The message has been changed to be more descriptive to the end user.

When a Default Printer was selected on the Options menu, saving the selection, logging out of the application and logging back in resulted in a non-save of the change

Version 5.0.13057.1

Release Date: 2/26/2013

Version 5.0 Build 13057.1 corrects one defect. The following provides a brief narrative of the changes found in this build.

Defects Corrected

Account Number Validation

The application is required to convert keyword values to their respective data types, The “Account Number” keyword value is defined in the application as ‘Integer.’ When a very large value was inserted into the Account Number keyword field followed by a “Save” operation, the application was using a normal integer conversion routine which caused the application to fail. The normal integer conversion routine was replaced with a large integer conversion routine which eliminates this issue.

Version 5.0.13060.1

Release Date: 3/1/2013

INFO-CAPTURE Version 5.0 Build 13060.1 corrects four defects and incorporates new functionality. The following provides a brief narrative of the changes found in this build.

Defects Corrected

Define Text Region Exception Error

When creating or modifying a keyword definition involving the XY Parse Definition process with a TIFF image in the viewer, if a user selected the ‘View Raw Text’ button on the ‘Define Text Region’ screen, the application responded with an exception error. Pressing the ‘Continue’ button on the error dialog would close the dialog and result in the ‘Raw XY Coordinate Data’ screen being displayed. The exception error was generated because the system cannot parse text on a TIFF image. The exception error is no longer generated. The ‘Raw XY Coordinate Data’ screen is displayed with no text.

Open From Archive Error

When the ‘Open from Archive’ screen is displayed and the ‘Open from Cache’ radio button is selected, the application would respond with an exception error if the ‘Cached DMS Document Types’ application setting contained documents the user didn’t have permissions to. Pressing the ‘Continue’ button on the error dialog would close the dialog and result in the user being returned to the ‘Open from Archive’ screen. The application now only displays the valid document types the user has access to.

Printer Setting

When a printer was selected on the 'Options' screen, pressing the 'OK' button closed the screen but did not retain the printer chosen. This resulted in users having to access the 'Options' screen again, select the desired printer, press the 'OK' button and then having to log entirely out and restart the application for the change to take effect. This deficiency has been corrected.

New Functionality

Document Definition Copy Function

INFO-CAPTURE now provides the ability to copy a document definition. This feature provides for the creation of a new document definition whereby the user would only have to change specific items (Keyword Definition, Scan Definition, etc.,) without having to define an entirely new document definition.

Resource Monitoring

INFO-CAPTURE incorporates a feature whereby if any of the services (print publisher, connection to the archive, etc.,) are disrupted, the system will automatically initiate a reconnect process. This eliminates the need for a user to manually initiate a reconnect process. If the application encounters a fatal error whereupon re-connection does not occur, the user will be prompted with an error message.

Required Keywords

A validation has been added to INFO-CAPTURE to ensure that values for required keywords have been entered for documents. In previous versions, even-though a keyword may have been defined in OnBase as required for a specific document type, INFO-CAPTURE ignored this requirement thus enabling a user to save a document without the required keywords. If the user attempts to close the document in the application without required keyword values, then an error message will be generated.

Batch File Import Deletion

Currently in INFO-CAPTURE, if Batch File Import is selected in the viewer, all TIFF images in the specified Batch File Import directory will be deleted as soon as the import process is completed. A new permission has been added to Application Settings which enables/disables the deletion of TIFF images in the Batch File Import directory after the import process is completed.

Date/Time Stamp

A new application setting has been added to the application to enable/disable the Date/Time stamp function when setting undefined signatures.

New Help Files

The HELP files for INFO-CAPTURE have been completely rewritten and incorporated into this version. These HELP files were designed to be more intuitive in their structure and replace inconsistencies that were widespread in the older versions.

Version 5.0.13072.1

Release Date: 3/15/2013

INFO-CAPTURE Version 5.0 Build 13072.1 is the same as Version 5.0.13060.1 but corrects an issue with missing images in some of the HELP files.

Defects Corrected

Define Text Region Exception Error

When creating or modifying a keyword definition involving the XY Parse Definition process with a TIFF image in the viewer, if a user selected the 'View Raw Text' button on the 'Define Text Region' screen, the

application responded with an exception error. Pressing the 'Continue' button on the error dialog would close the dialog and result in the 'Raw XY Coordinate Data' screen being displayed. The exception error was generated because the system cannot parse text on a TIFF image. The exception error is no longer generated. The 'Raw XY Coordinate Data' screen is displayed with no text.

Open From Archive Error

When the 'Open from Archive' screen is displayed and the 'Open from Cache' radio button is selected, the application would respond with an exception error if the 'Cached DMS Document Types' application setting contained documents the user didn't have permissions to. Pressing the 'Continue' button on the error dialog would close the dialog and result in the user being returned to the 'Open from Archive' screen. The application now only displays the valid document types the user has access to.

Printer Setting

When a printer was selected on the 'Options' screen, pressing the 'OK' button closed the screen but did not retain the printer chosen. This resulted in users having to access the 'Options' screen again, select the desired printer, press the 'OK' button and then having to log entirely out and restart the application for the change to take effect. This deficiency has been corrected.

New Functionality

Document Definition Copy Function

INFO-CAPTURE now provides the ability to copy a document definition. This feature provides for the creation of a new document definition whereby the user would only have to change specific items (Keyword Definition, Scan Definition, etc.) without having to define an entirely new document definition.

Resource Monitoring

INFO-CAPTURE incorporates a feature whereby if any of the services (print publisher, connection to the archive, etc.) are disrupted, the system will automatically initiate a reconnect process. This eliminates the need for a user to manually initiate a reconnect process. If the application encounters a fatal error whereupon re-connection does not occur, the user will be prompted with an error message.

Required Keywords

A validation has been added to INFO-CAPTURE to ensure that values for required keywords have been entered for documents. In previous versions, even-though a keyword may have been defined in OnBase as required for a specific document type, INFO-CAPTURE ignored this requirement thus enabling a user to save a document without the required keywords. If the user attempts to close the document in the application without required keyword values, then an error message will be generated.

Batch File Import Deletion

Currently in INFO-CAPTURE, if Batch File Import is selected in the viewer, all TIFF images in the specified Batch File Import directory will be deleted as soon as the import process is completed. A new permission has been added to Application Settings which enables/disables the deletion of TIFF images in the Batch File Import directory after the import process is completed.

Date/Time Stamp

A new application setting has been added to the application to enable/disable the Date/Time stamp function when setting undefined signatures.

New Help Files

The HELP files for INFO-CAPTURE have been completely rewritten and incorporated into this version. These HELP files were designed to be more intuitive in their structure and replace inconsistencies that were widespread in the older versions.

Version 5.0.13081.1

Release Date: 3/28/2013

INFO-CAPTURE version 5.0 Build 13081.1 corrects four defects and incorporates ten new features.

Defects Corrected

Open from Archive Screen

- The Open from Archive screen has been redesigned to provide flexible sizing so that more display area is available. This can reduce the usage of horizontal and vertical scrollbars to view information such as auto-name strings for example.
- The screen also employs a dropdown selection box from which the user can select where the document types will display from (Archive, Doc Definitions, etc.). This replaces the former design that incorporated radio buttons.
- The screen now provides double-click functions to find and open documents as well as retaining the “Find” and “Open” buttons.

Resource Monitoring

- Inbuilt into the application is functionality that constantly monitors the connection state of the components that work in union with each other. If the application detects an interruption, it will automatically attempt a reconnection process which if successful, will alert the user that reconnection has taken place. This minimizes the user interaction required to manually establish reconnection.
- If the event of a fatal error, the application incorporates standard error messaging to inform the user that a serious event has occurred which may require outside intervention.

Validation Control

- The application respects the permissions that are established in OnBase by user. If a user is only permitted access to specific document types in Onbase, then only those document types can be opened in INFO-CAPTURE by the user.
- Likewise, if specific keywords have been configured in OnBase as required keywords on specific documents, then those same documents in INFO-CAPTURE cannot be saved unless an entry in the required keyword field is present.

Viewer

- Text associated with the icons on the toolbar can now be displayed. A checkbox has been added to the ‘Options’ screen that when selected, will result in descriptive text displaying next to the respective icon on the toolbar.
- The ability to highlight multiple document definitions for movement between the ‘Available Document Definition’ and ‘Selected Document Definitions’ list panes is now available by using the “CTRL” key. Users can highlight multiple document definitions to be moved and then use the left/right arrow keys to move an entire group.
- An “Undo” function has been incorporated that provides a user the ability to undo any application of signatures or text made to a document in the viewer.
- Consistent Error messages have been added and are displayed whenever a user attempts to close a document without saving their work.

New Functionality

Batch File Import

- A new Application Setting, ‘Batch File Delete’ has been added to the application which controls the deletion of images in the Batch File Directory. Until this feature was added, the application would

automatically delete the images in the directory. Automatic deletion can cause issues if there was an error in processing thus this feature provides an additional level of control.

Custom Queries

- Users now have the ability to access custom queries configured in OnBase from the 'Open from Archive' screen in the application. This enables users to access only documents that are configured for the custom query based on configured constraints (keywords for example) and work only those documents.

Document Definition Copy Function

- The ability to copy a predefined document definition is now available in the application. A "Copy" button has been incorporated on the Document Definition screen which enables users to highlight an existing definition and copy it. This reduces the time spent on creating new document definitions. With the copy function, selected values can be retained while others can be changed.

Document Definition Rename Function

- The ability to change the name of a predefined document definition is now available in the application. A user simply highlights the definition to be changed and types the new name. Validation is incorporated into the application to prevent the renaming of a document definition to one that is already defined.

External Credential for Print Spooler

- When working with mainframe data streams, the application now assigns a user's external credentials automatically. This eliminates manual intervention of the user to enter his/her credentials to engage the print spooler.

New Help Files

- The HELP files for the application have been completely rewritten to provide easier navigation to content and to provide a greater level of detail for the functionality in the application.

Required Signature Override

- This feature was added to address situations where signed documents are scanned into the system but the document definition configuration would not permit the saving of the document because a signature from a signature pad was required. A new Application Setting, 'Override Required Signature' has been incorporated whereby users will be questioned whether the document should be saved or not if the application doesn't detect the application of an electronic signature.

Unidentified Signature

- The application now incorporates the ability to apply a non-defined signature on a document. Unlike a defined signature that is configured based on coordinates associated with a document, invoking this function provides a user with the ability to apply a signature anywhere on a document.

Unidentified Signature Date/Time Display

- A new Application Setting, 'Undefined Signature Date Time Display' has been added to the application. This setting controls whether or not the Date/Time stamp is applied for an undefined signature.

Unidentified Text

- A new Application Setting, 'Set Undefined Text' has been added to the application. Unlike a defined text location on a document that is configured using coordinates, this function enables a user to place text anywhere on a document.

Version 5.0.13211.1

Release Date: 7/30/2013

INFO-CAPTURE version 5.0 Build 13211.1 corrects one defects and incorporates no new features.

Defects Corrected

Update verbiage in Parked Document Set Administration console.

Change “Is Deleted” to “Marked for Deletion” within the administration console for parked document sets. Change is made in two places within the user interface.

Version 5.0.13317.1

Release Date: 12/18/2013

INFO-CAPTURE version 5.0 Build 13317.1 provides one major system update, corrects four defects and incorporates no new features.

System Update

INFO-CAPTURE now incorporates the new crypto licensing model. This means the product is licensed to the company and can be moved among servers freely. Previously, the product was registered to a specific server and if the server was a Virtual Machine and moved to a new physical server, the product would have to be re-registered.

Defects Corrected

Installer

When upgrading the INFO-CAPTURE client, and the printer exists, unchecking the printer component in the installer still is occurring, and an error is presented during installation. This has been corrected, and if the IC Print connection is not checked, it will no longer attempt to install this component.

Licenses Not Released

Concurrent Client licenses were not being released in a timely fashion. Added a timer to disconnect the user session every 5 minutes, to increase chance of licenses that are not in use, being released.

Parked Document Set maximum length.

Do not allow Park Doc Set name/ID to be longer than 50 characters.

License hash case sensitivity

In the previous version, utilizing the new license encryption method, registration will fail if the license key is generated using a domain name which is of different case than the client or server machines. Code has been updated to ignore case sensitivity.

Version 5.0.14014.1

Release Date: 1/14/2014

INFO-CAPTURE version 5.0 Build 14014.1 corrects one defect and incorporates no new features.

Defects Corrected

DocDefIntegrator

App configuration changes to fix a bug where the document integrator would show an error dialog when trying to import a document definition file from an earlier version of INFO-CAPTURE.

Version 5.0.14178.1

Release Date: 6/27/2014

INFO-CAPTURE version 5.0 Build 14178.1 corrects one defect and incorporates no new features.

Defects Corrected

Multiple User Logins

Adjusted the application so it detects multiple logins and waits for a user response before registering with the broker. This change corrects a situation in which a user could login to INFO-CAPTURE from multiple workstations, causing performance degradation due to overhead created by excessive authentication attempts. Users must now respond to a prompt in which to continue with connection or abort. This additionally incorporates the removal of an application setting "ShowConcurrentUserWarning", causing this check to always be performed.

Version 5.0.14272.1

Release Date: 9/29/2014

INFO-CAPTURE version 5.0 Build 14272.1 provides one major system update, and corrects no defects and incorporates no new features.

System Update

INFO-CAPTURE is now compatible with Windows Server 2012 and SQL 2012.

Version 5.0.14314.1

Release Date: 10/11/2014

INFO-CAPTURE version 5.0 Build 14314.1 corrects one defect and adds one enhancement.

Defects Corrected

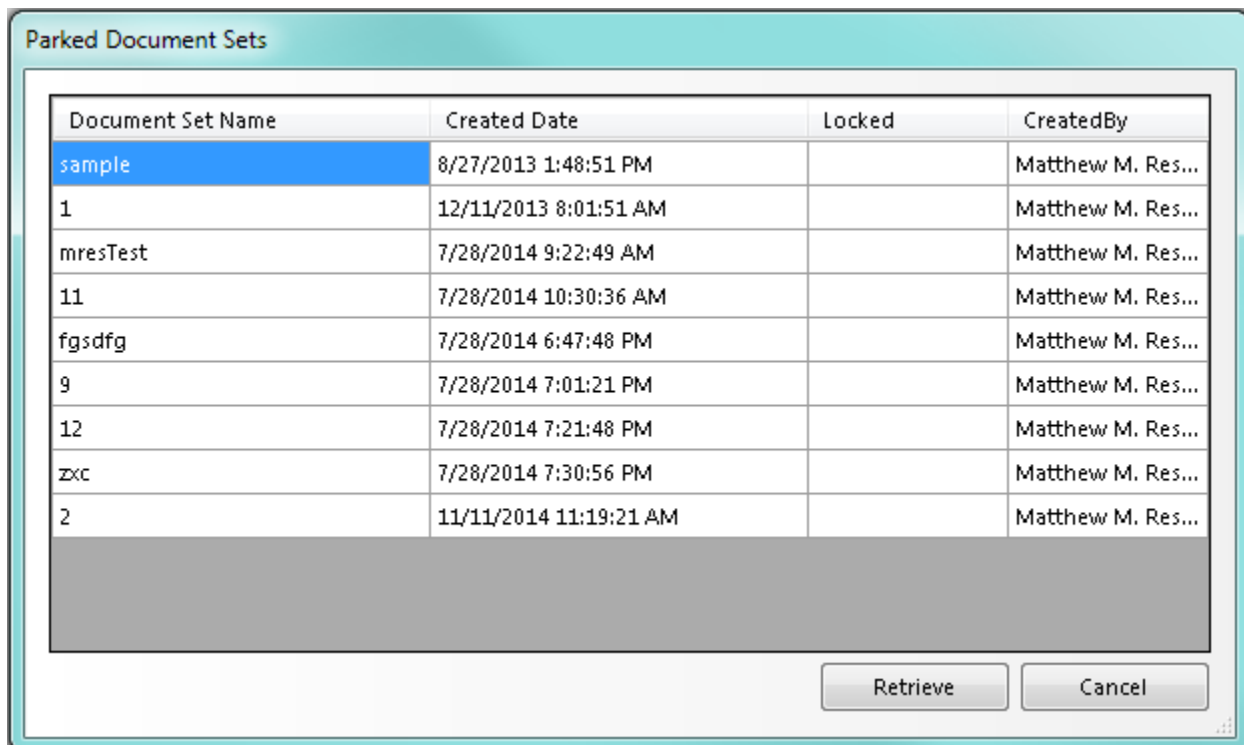
Sort Order

Updated the application providing alphabetical sorting for areas in which listings are currently sorted by ID. The following lists were updated to display alphabetical sorting: Document Definitions, Scan Groups, and definitions within scan groups.

Enhancements

Parked Document Set Grid View

This build of the application adds a tabular grid for parked document sets with sortable columns which include: parked doc set name, creator, creation date, and lock status.



Document Set Name	Created Date	Locked	CreatedBy
sample	8/27/2013 1:48:51 PM		Matthew M. Res...
1	12/11/2013 8:01:51 AM		Matthew M. Res...
mresTest	7/28/2014 9:22:49 AM		Matthew M. Res...
11	7/28/2014 10:30:36 AM		Matthew M. Res...
fgsdfg	7/28/2014 6:47:48 PM		Matthew M. Res...
9	7/28/2014 7:01:21 PM		Matthew M. Res...
12	7/28/2014 7:21:48 PM		Matthew M. Res...
zxc	7/28/2014 7:30:56 PM		Matthew M. Res...
2	11/11/2014 11:19:21 AM		Matthew M. Res...

Version 5.0.15091.1

Release Date: 4/1/2015

INFO-CAPTURE version 5.0 Build 15091.1 corrects one defect and adds no enhancements.

Defects Corrected

Sort Order

Updated the application providing alphabetical sorting for the keyword list within Document Definitions.

Version 5.0.15125.1

Release Date: 05/05/2015

INFO-CAPTURE version 5.0 Build 15125.1 adds one enhancement.

Defects Corrected - None

Enhancement

This build adds functionality to support padding of 'scraped' keyword values.

Version 5.6.15191.3

Release Date: 07/10/2015

INFO-CAPTURE version 5.6 Build 15191.3 adds one enhancement.

Defects Corrected - None

Enhancement

This build supports OnBase 15, and eliminates the need for Web Services Toolkit. All functions in this release support the Hyland Unity API.

Version 5.6.15264.2

Release Date: 09/21/2015

INFO-CAPTURE version 5.6 Build 15264.2 corrects one defect.

Defects Corrected

Issue: The default institution number is not set

Fix: Default institution number will get picked up from the OnBase default keyword value

User Name will get picked up when your "User Name keyword" setting value (App settings->Client->User Name keyword) matches the keyword ID defined in the document type in OnBase.

Version 5.6.15334.1

Release Date: 11/30/2015

INFO-CAPTURE version 5.6 Build 15334.1 corrects one defect.

Defects Corrected

Issue: Keyword length can't exceed 20 characters.

Fix: This build has the fix to properly perform OnBase Keyword Validation changed in the latest Unity API.

Version 5.7.16047.1

Release Date: 2/19/2016

Enhancements

- Added support for OnBase version 14.

Version 5.7.16183.2

Release Date: 7/1/2016

Enhancements

- Add Windows tablet signature functionality using mouse or stylus

Version 5.7.16348.1

Release Date: 12/13/2016

Defects Corrected

- Allow "print all" validation to work correctly when encrypted signature authentication is disabled
- Validate and refresh document list (top left pane) after signing documents

Version 5.7.17214.1

Release Date: 08/03/2017

Defects Corrected

- Error message was generated from the keyword drop down menu when the keyword was configured to use a keyword data set.

Version 5.7.17285.1

Release Date: 10/12/2017

Defects Corrected

- When retrieving parked documents the page count on the displayed document does not respect the page count of the docs in the document list

Version 5.7.17303.3

Release Date: 10/30/2017

Defects Corrected

- Retrieving Parked Document Sets and creating new Parked Document Sets runs slow. Modified source code to retrieve all data at once instead of in batches of 1,000 documents at a time.
- Saving a Parked document set runs slow. Modified source code to save all data at one instead of in batches of 1,000 documents at a time
- Retrieving document definitions is slow. Modified source code query to run more efficiently and reduce overhead. Load all document definitions and information at one time.

Adobe DC v 2018-009-20050

Release Date: 11/29/2017

Defect

With this version of Adobe, users can't identify any forms. Adobe has acknowledged the issue and plan to fix it in their next release. In the meantime, Adobe has offered this registry key setting workaround. However, PROFORMANCE has found that this suggested fix does not always work. PROFORMANCE suggests at this time you do not upgrade to Adobe version 2018-009-20050 thru 2018.011.20036.

1. Open Registry
2. Go to -
 - 32 bit machine: HKLM\SOFTWARE\Adobe\Acrobat Reader\DC\FeatureState
 - 64 bit machine: HKLM\SOFTWARE\Wow6432Node\Adobe\Acrobat Reader\DC\FeatureState
3. If FeatureState is not already present there, create it as a New key
4. Inside FeatureState, create a new DWORD and rename it as – 4033257
5. Assign the value 0 to 4033257 key
6. Relaunch IC

Details from Adobe:

Acrobat needs to work with fonts while printing. This is internally dependent on the Operating system, and the type of printer used (PS, PCL, XPS, etc.) A modification was made to Acrobat printing in case of non-PS printers, which changes the way fonts are embedded in the print steam. This resulted in the functionality break observed at your end. By using the registry key, that change is reverted, therefore fixing the issue for you. Presently this is a recommended fix by Adobe.

Just to add, our team plans to work with Microsoft to further resolve a few pending issues in this space and so you could see a few updates here.

This is an Adobe HelpX page stating the mentioned workaround for an issue which has the same root cause <https://helpx.adobe.com/acrobat/kb/prn-files-using-pcl-printing-increases-file-size.html>

Version 5.7.17321.1

Release Date: 12/04/2017

Defects Corrected

- Screen would flicker when try to retrieve a parked document set
- At times, the user was previously unable to delete a keyword from a document definition (in v5.7.17303.3 version only)
- At times, the user was unable to delete a document definition. (in v5.7.17303.3 version only)

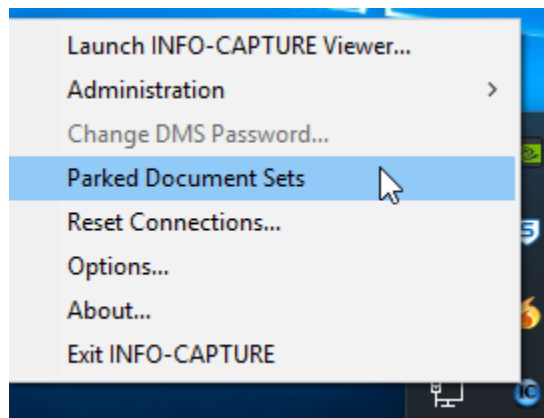
- Unable to close and reopen IC without stopping IC via the Task Manager and relaunching (v5.7.17303.3 version only)

Version 5.7.18056.1

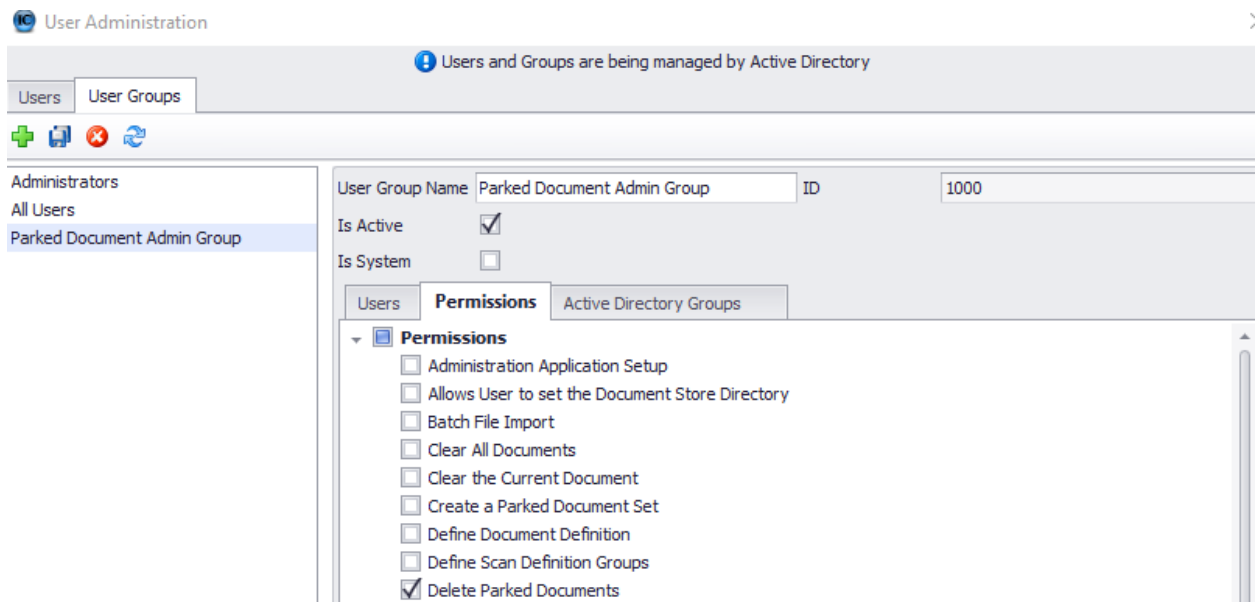
Release Date: 2/26/2018

Enhancements

- Support for Microsoft Windows 2016
- Support for Microsoft SQL 2016
- Support for Hyland OnBase 17.x
- Moved “Parked Document Sets” menu option from the Administration menu. This allows users who are not INFO-CAPTURE administrators to be able to work with parked document sets.



- INFO-CAPTURE administrators can now grant or deny users rights to deleting Parked Documents.



Defects Corrected

- Append page now appends the page of the second document. NOTE: OnBase EDM Services must be installed for this option to be available.

Version 5.7.18163.1

Release Date: 6/12/2018

Defects Corrected

- Fixed communications error between INFO-CAPTURE and INFO-ACCESS Internal Storage.

Version 5.7.18241.1

Release Date: 9/4/2018

Enhancements

- Suppressed dialog box that prompts users for scanner setting when using native scanner driver.

Version 5.7.20023.1

Release Date: 1/31/2020

Enhancements

- Changed functionality to prevent overwriting of document attributes with data from INFO-CAPTURE when keywords are assigned through INFO-CAPTURE. Any keywords not input through INFO-CAPTURE will populate with OnBase autofill as usual. However, any keywords assigned by INFO-CAPTURE will not be overwritten by an OnBase keyword set.